

JANUARY 2026



GARDEN PROGRAMS

SUN	MON	TUE	WED	THU	FRI	SAT
<p>OUTDOOR PROGRAMS ARE WEATHER DEPENDENT. PLEASE CHECK THE WEBSITE (FCL.ORG) IF THE WETHER IS QUESTIONABLE</p>		 <p>Faulkner County Library</p>	<p>31 LIBRARY CLOSED</p>	<p>1 LIBRARY CLOSED</p>	<p>2</p>	<p>3 NO GARDEN PROGRAMS TODAY</p> 
<p>4</p> 	<p>5</p>	<p>6</p>	<p>7</p>	<p>8 COMMUNITY GARDEN WORK GROUP 3 - 5 PM</p> 	<p>9</p>	<p>10 COMMUNITY GARDEN WORK GROUP 9 - 11 AM</p> 
<p>11</p> 	<p>12</p>	<p>13</p>	<p>14</p>	<p>15 COMMUNITY GARDEN WORK GROUP 3 - 5 PM</p> <p>MASTER GARDENERS BEEKEEPING 5:30 PM</p>	<p>16</p>	<p>17 COMMUNITY GARDEN WORK GROUP 9 - 11 AM</p> <p>PROPAGATION STATION: SUCCULENTS 11 AM</p> 
<p>18</p> 	<p>19 LIBRARY CLOSED</p>	<p>20</p>	<p>21</p>	<p>22 COMMUNITY GARDEN WORK GROUP 3 - 5 PM</p> <p>BONFIRE & S'mores 3:30 - 5:30 pm</p> 	<p>23</p>	<p>24 COMMUNITY GARDEN WORK GROUP 9 - 11 AM</p> 
<p>25</p> 	<p>26</p>	<p>27</p>	<p>28</p>	<p>29 COMMUNITY GARDEN WORK GROUP 3 - 5 PM</p> 	<p>30</p>	<p>31 COMMUNITY GARDEN WORK GROUP 9 - 11 AM</p> 

Program Details

Community Garden Work Groups: Join us in the community garden to work our plots, water, and work together to make our garden beautiful. It's a great time to socialize, learn from each other, and beat the heat! Children welcomed with adult supervision. Shawn, the Garden Programmer, will be on hand to help and answer questions.

AmeriCorps: UCA BearServe volunteers join us to help in the community garden.

Propagation Station: Succulents Learn how to start new plants from clippings. Participants will get to take home their own plant. Materials provided.

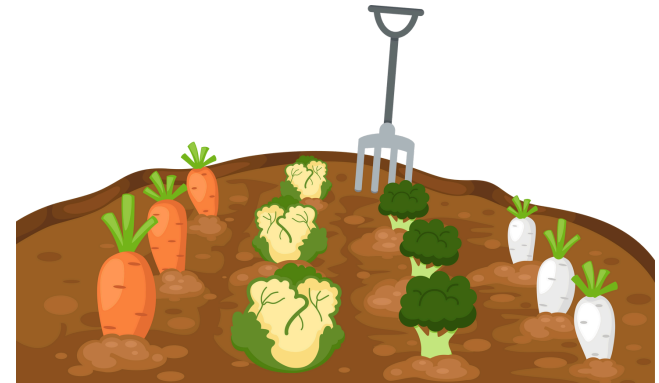
Master Gardeners (Beekeeping Training): Learn the basics of beekeeping. The Master Gardeners will be on hand to demonstrate and answer questions.

Bonfire & S'mores: Join us in the garden for a bonfire and s'mores. A fun time to enjoy the garden and socialize with your fellow library patrons.

**** Weather dependent ****

Interested in a Community Garden Plot? Ask the Garden Programmer (Shawn) or inquire at the front desk about how to sign up for a plot. If the Garden Programmer is available, he will be happy to give you a garden tour and explain how it works.

You can also ask questions via email: shawn.standley@fcl.org



Did you know we have a community seed bank? We are home to Arkansas' oldest seed library! Patrons may take seeds home for their personal gardens (or use them in the community garden). Ask the front desk how it works.

